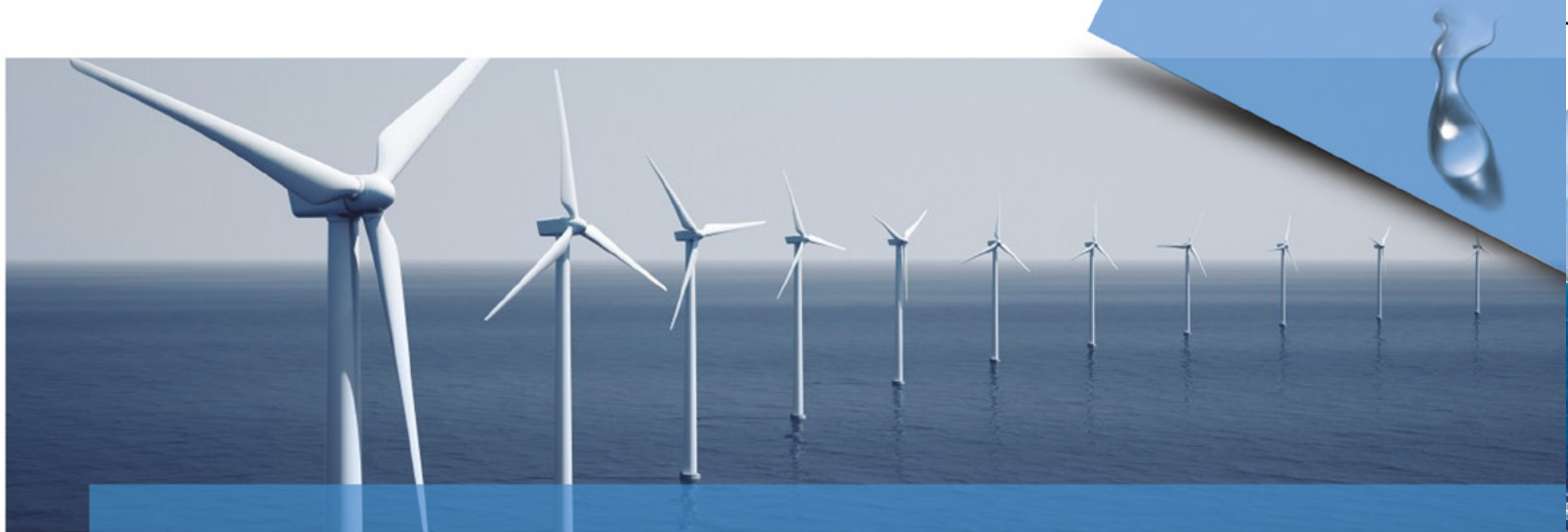




**WATER BASED SYSTEM
CLEANERS – SEALERS – RELEASE AGENTS**

**THE GREEN SOLUTION FOR COMPOSITES
A FULL SAFE RANGE**





OUR EXPERIENCE

WE INVITE YOU TO SHARE OUR POSITIVE EXPERIENCE

Dear Customers,

We have been developing and supporting our customers to use water based release agents for more than 15 years.

At the beginning, it was not so easy to replace the solvent based especially due to mentality and to lower efficiency. Our investigations, improvement, commitment and tenacity have paid.

At the end, our experiences and success, step by step, drove us to be able to supply today a complete performant water based system which includes, release agents, cleaners and sealers.

Finally, by working hard, all together, we all won. We are all proud and all happy with that, our customers first.

ENVIRONMENTAL ORIENTATION



OUR ENVIRONMENTAL ORIENTATION

Dear Customers,

Since more than 15 years, ADDITEK feels concerned by environmental rules, staff and customers health care.

Therefore, we manage to:

- Measure and control waste production.
- Improve our process to limit production of waste.
- Ensure waste destruction cycle traceability.
- Improve our process to decrease energy consumption.
- Strongly focus in formulating our water based products in total compliance with REACH regulation and health care for final users.

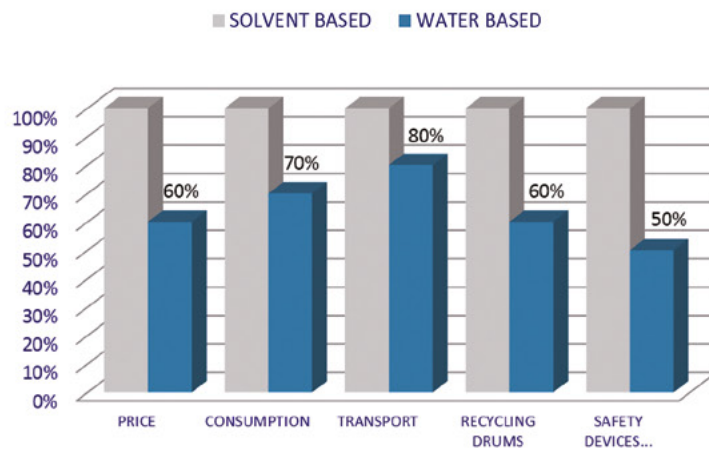
P. MAHIEU
Managing Director



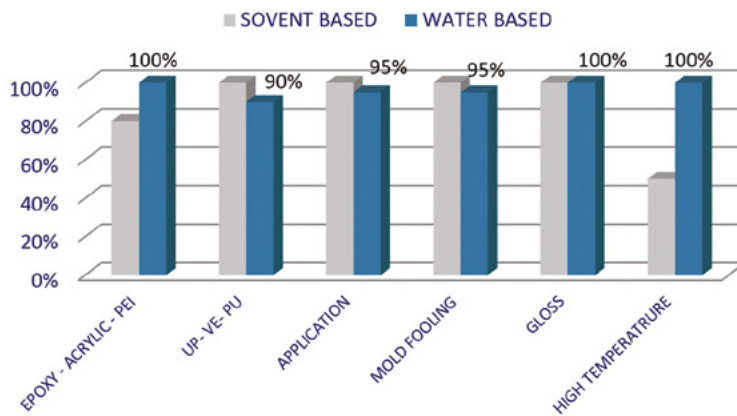


WATER OR V.O.C BASED?


COST COMPARISON





PERFORMANCES



CLEANERS – SEALERS – RELEASE AGENTS

MOULNET	CLEANERS	VOC	REACH	PICTOGRAM	RISK
888-W	Water based surface degreaser	0%	YES	No pictogram	--
	BASIC SOLVENT DEGREASER	100%	YES / NO		H225,H315,H318, H319,H361,H336, H373

BOUCHEX	SEALERS	VOC	REACH	PICTOGRAM	RISK
WBS	Sealer for micro-porosities	<0.3%	YES	No pictogram	--
WBS-P3	Sealer for strong micro-porosities	<0.3%	YES	No pictogram	--
	BASIC SOLVENT SEALER	97%	YES / NO		H226,H315,H319, H336,H412

MOULEX®	RELEASE AGENTS	VOC	REACH	PICTOGRAM	RISKS
WD401	Semi-permanent release agent	<0.3%	YES	No pictogram	--
WD401-GB	Semi-permanent release agent, high slip and gloss.	< 0.3%	YES	No pictogram	--
WD401-NP	High slip release agent - short drying time before molding – good gloss – low mold fooling.		YES		
WD401-AC	Semi-permanent release agent with corrosion inhibitor for steal molds	<0.3%	YES	No pictogram	--
WD401C	Semi-permanent	<0.3%	YES	No pictogram	--
	BASIC SOLVENT RELEASE AGENT	96%	YES		H226,H315, H319, H336,H412

REACH

Dear Customers,

One of the aim of REACH is to ensure a high level of protection of human health and the environment from the risks that can be posed by chemicals.

These chemicals could be under authorization or interdiction.

First step is to create a list (SVHC list) of those chemical substances.

We hereby certify that the MOULNET 888W, BOUCHEX WBS & WBS-P3, MOULEX® WD401, MOULEX® WD401GB, MOULEX® WD401NP, MOULEX® WD401AC and MOULEX® WD401C

do not contain any of the SVHC listed substances.

All the substances in the recipes are registered or pre-registered.



Mr. Jacques DELFORGE
Quality Manager of ADDITEK SAS

ISO 9001



CERTIFICATE

Management system as per
EN ISO 9001 : 2008

In accordance with TÜV NORD CERT procedures, it is hereby certified that

ADDITEK S.A.S.
ZI Route de Thennes
80110 MOREUIL
France



applies a management system in line with the above standard for the following scope

Design, production, sales and trade of mould release agents and processing aids used in the rubber, thermoplastics, composites, wood and paper impregnation industries

Certificate Registration No. 04 100 051274
Audit Report No. 3516 0991

Valid until 2018-08-02
Initial certification 2012



Certification Body
at TÜV NORD CERT GmbH

Essen, 2015-08-05

This certification was conducted in accordance with the TÜV NORD CERT auditing and certification procedures and is subject to regular surveillance audits.

TÜV NORD CERT GmbH

Langemarckstraße 20

45141 Essen

www.tuev-nord-cert.com





MOULNET 888W



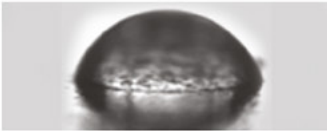
MOLDS WATER BASED CLEANER

Formulated with specific strong surfactants to provide a good degreasing effect on the mold surface, to improve application and performance of sealers and release agents.

Very suitable to remove dirt build up like resin monomers residue, calamine, release agents, waxes etc...

Good cleaning effect result on high surface tension of the mold and a better release agent coating

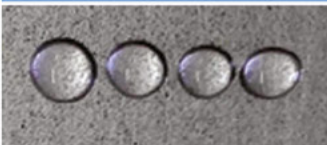
BEFORE CLEANING



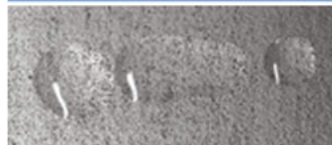
AFTER CLEANING



BAD WETTABILITY



GOOD WETTABILITY



SPECIFICATION DATA

MOULNET	COLOR	PH	DRY CON TAINS	FORM	DENSITY
888W	colourless	1.23	4.49%	Liquid	1.01

*After delivery, use and storage of our products not being under our control, we decline any express or implicit responsibility as to their behaviour.





MOULNET 888W

GENERAL RECOMMENDATIONS FOR USE

1. To apply generously with a cloth or a brush.
2. To wipe off
3. To repeat steps 1 and 2 until getting a degreased, dried and clean surface.

Test should be done before production using
 For technical support, or full specific recommendation please
 contact us: contact@additek.net

Consumption:	Applying with a cloth	Applying with a spray gun
	100g/m ²	15g/m ²
Packaging :	5kg, 25kg, 220kg, 1000kg drums	

SAFETY RECOMMENDATIONS - PROTECTION

Precautions for safe handling and storage

Avoid contact with skin and eyes, inhalation of vapors and mists. Do not eat or drink while working. Keep away from food, drink and feed. Instructions as regards storage premises: Adequately ventilated premises.

Exposure controls/personal protection

Eye protection: eye glasses with side protection. Protection for hands: PVA (polyvinyl alcohol).



If the product is sprayed, the use of a respiratory protection is recommended: filtering half-face mask (DIN EN 149).

For more details see safety data sheet or contact us: contact@additek.net



BOUCHEX WBS – P3



BOUCHEX WBS & WBS P3 WATER BASED SEALER

Formulated with specific very low viscosity resin to penetrate into the micro-porosities of the mold surface.

Easy to apply.

Two grades: standard WBS or WBS P3 for more porous surface.

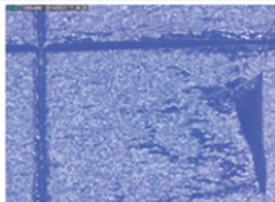
Very suitable to reduce strongly mold fooling due to penetration and adherence of resins monomers into the micro-porosities.

Very suitable to improve the water based release agents coating. BOUCHEX and MOULEX® water based release agents have excellent affinity. The surface tensions of both products are similar.

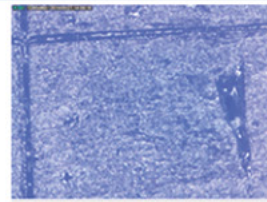
That's the reason why the BOUCHEX is also good primer to enhance coating and performance of MOULEX water based release agents.

MOLD SURFACE – ZOOM X200

WITHOUT BOUCHEX

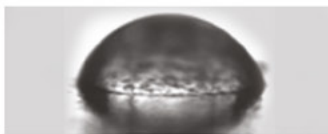


WITH BOUCHEX



BOUCHEX AS A PRIMER FOR MOULEX®

MOULEX® WD401 wettability on a mold surface WITHOUT BOUCHEX



MOULEX® WD401 wettability on a mold surface WITH BOUCHEX



SPECIFICATION DATA*

BOUCHEX	COLOR	FORM	DRY CON TAINS	PH	DENSITY
WBS	WHITE	LIQUID	2.7 - 3.7%	Liquid	0.98-1.00
WBS-P3	WHITE	LIQUID	3.00-4.00%	Liquid	0.98-1.00

*After delivery, use and storage of our products not being under our control, we decline any express or implicit responsibility as to their behaviour.



BOUCHEX WBS / P3

GENERAL RECOMEMNDATIONS FOR USE

This product is used only for new molds or after strong cleaning surface or maintenance.

- 1.To apply two layers with a cloth, a brush or a specific spray gun.
- 2.To wipe off with clean cotton cloth between each layer and wait 2 minutes.
- 3.To polish with an antistatic, clean and soft cotton cloth.

To wait one night at room temperature before applying release agent.

Test should be done before production using
For technical support, or full specific recommendation please contact us:
contact@additek.net

Consumption :	Applying with a cloth	Applying with a spray gun
	100g/m ²	15g/m ²
Packaging :	5kg drums	

SAFETY RECOMMENDATIONS - PROTECTION

Precautions for safe handling and storage

Avoid contact with skin and eyes, inhalation of vapors and mists. Do not eat or drink while working. Keep away from food, drink and feed. Instructions as regards storage premises: Adequately ventilated premises.

Exposure controls/personal protection

Eye protection: eye glasses with side protection. Protection for hands: PVA (polyvinyl alcohol).



If the product is sprayed, the use of a respiratory protection is recommended: filtering half-face mask (DIN EN 149).

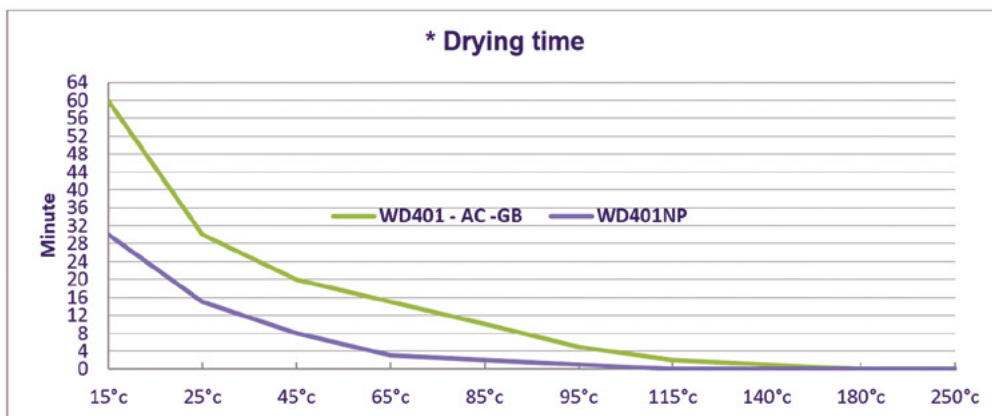
For more details see safety data sheet or contact us: contact@additek.net



MOULEX® WD401X

Formulated to release all kind of resins, glues and plastics.
 Easy to apply
 Various grades adjusted to your needs: semi-permanent, high slip, high gloss, corrosion inhibitor, quick application before molding etc....
 Compatible with all kind of molds.

SELECTION GUIDE					
MOULEX®	WD401	WD401GB	WD401NP	WD401AC	WD401C
Semi-permanent	++++	++	NO	++++	++++
Slip	+	+++	+++	+	+
Gloss	+	++	+++	+	+
Corrosion inhibitor	+	+	+	+++	+
Mold fooling	+	+	++	+	+
Temperature resistance	Max 450°C	Max 450°C	Max 450°C	Max 450°C	Max 450°C
Fish eyes	No	slight	No	No	No
Auto-release	No	possible	No	No	No
Waiting time before molding 25°C *	30 min	30 min	10 to 15 min	30 min	30 min



SPECIFICATION DATA					
MOULEX®	COLOR	FORM	DRY CONTAINS	PH	DENSITY
WD401	WHITE	LIQUID	1.97 – 2.24 %	8.7 – 10.4	0.99 – 1.00
WD401-GB	WHITE	LIQUID	3.5 – 4.5 %	9.0 – 11.0	0.98 – 1.00
WD401-NP	WHITE	LIQUID	2.1 – 3.1 %	7.0 – 9.0	0.98 – 1.00
WD401-AC	WHITE	LIQUID	2.1 -3.1 %	7.0 – 9.0	0.98 – 1.00
WD401-C	RED	LIQUID	2.07 – 2.34%	8.7 – 10.4	0.98 – 1.00

*After delivery, use and storage of our products not being under our control, we decline any express or implicit responsibility as to their behaviour.



MOULEX® WD401X

GENERAL RECOMMENDATIONS FOR USE

This product is used only for new molds or after strong surface cleaning or mold maintenance.

1. To apply 2-3 layers with a cloth, a brush or a specific spray gun.
2. To wipe off with clean cotton cloth and wait 2 minutes between each layer.
3. To polish with an antistatic, clean and soft cotton cloth.
4. To wait a minimum of 15 minutes before molding, or the time necessary, following the selection guide and graphic.
5. To apply 1 or 2 layers when it is necessary.

If the mold surface is above 50°C when to apply, it is not necessary to wipe off or even to polish.

Test should be done before production using

For technical support, or full specific recommendation please contact us: contact@additek.net

Consumption :	Applying with a cloth	Applying with a spray gun
	100g/m ²	15g/m ²
Packaging :	5kg, 25kg, 220kg, 1000kg drums	

SAFETY RECOMMENDATIONS - PROTECTION

Precautions for safe handling and storage

Avoid contact with skin and eyes, inhalation of vapors and mists. Do not eat or drink while working. Keep away from food, drink and feed. Instructions as regards storage premises: Adequately ventilated premises.

Exposure controls/personal protection

Eye protection: eye glasses with side protection. Protection for hands: PVA (polyvinyl alcohol).



If the product is sprayed, the use of a respiratory protection is recommended: filtering half-face mask (DIN EN 149).

For more details see safety data sheet or contact us : contact@additek.net



ADDITEK SAS, Production plant ZI Route de Thennes, 80110 Moreuil, France, TVA n°
FR 58 418 609 400
Tel: + 33 (0)3 22 09 90 28 - Fax: + 33 (0)3 22 09 03 70